



Hover explore

Adventure awaits

*Your all-in-one guide to nearby walks, sights, eateries,
and endless adventures on the Isle of Wight*





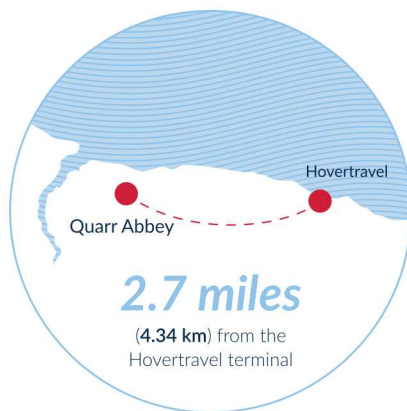
Quarr Abbey

Visitors to Quarr Abbey can immerse themselves in its serene surroundings, adorned with stunning gardens, lush greenery, and a sense of timeless spirituality. The Abbey itself stands as a testament to architectural splendour, featuring elegant stonework and intricate details that hark back to centuries past.

But Quarr Abbey offers more than just a glimpse into history. It serves as a vibrant community hub, inviting guests to explore and engage in various activities. The Abbey's Tea Rooms provide a cosy space to enjoy a cup of tea or indulge in delicious homemade treats, while the Farm Shop offers an array of local produce, artisanal goods, and unique gifts to take home.

So, whether you wish to stroll through enchanting gardens, savour homemade treats, discover the Abbey's fascinating past, or find solace in moments of serenity, Quarr Abbey on the Isle of Wight promises an enriching and unforgettable experience for all who venture within its storied walls.

Visit: quarrabbey.org



Approximate travel times from the Hovertravel terminal



Approximate travel times from the Hovertravel terminal



Seaview Hotel

Discover the enchanting Seaview Hotel, an idyllic coastal retreat with stunning sea views, cosy rooms, and attentive staff, it offers a tranquil escape from the everyday. Indulge in delicious cuisine with a style that is very Modern British with a regional Isle of Wight twist.

Visit: seaviewhotel.co.uk



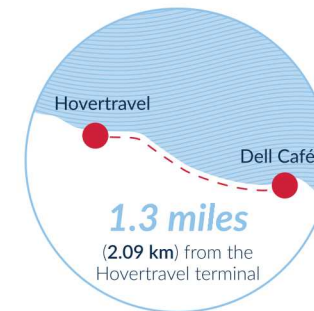
Approximate travel times from the Hovertravel terminal



Dell Café

Escape to the Dell Cafe situated on the panoramic seafront of Puckpool in Ryde offering stunning views across the Solent with the options of delicious food and drink. With locally sourced ingredients, friendly staff, and a convenient location for island exploration, it's a must-visit destination for a delightful experience.

Visit: dellcafe.com



FLY & DINE DEAL*

*Fly across the Solent and then enjoy a delicious two course lunch from the Bar Menu, drinks not included. Scan the code to find out more.



TAPNELL FARM PARK



Tapnell Farm Park

Nestled amidst stunning countryside and boasting breathtaking views of the Island and Solent, Tapnell Farm Park awaits as an award-winning, all-weather attraction – an ideal family destination! From its dairy farm origins, it has blossomed into one of the Island's top tourist spots, offering a myriad of indoor and outdoor activities to explore and enjoy. There are go-karts, jumping pillows, trim trails, sledge slides and straw barn fun, plus our amazing animals in the paddocks and animal barn!

Visit: tapnellfarm.com/play



Approximate travel times from the Hovertravel terminal

1hr 49 MINS	1hr 36 MINS	42 MINS
-----------------------	-----------------------	-------------------



Approximate travel times from the Hovertravel terminal

49 MINS	13 MINS	20 MINS	9 MINS
-------------------	-------------------	-------------------	------------------

Lily's Café

The perfect 'home from home' setting for dining, grabbing a snack or just enjoying a coffee and watching the world go by. The café is located at the top of the High street, a short walk from Seaview seafront.

The café serves a range of food all day, including breakfast. On offer are delicious freshly made salads, paninis and wraps & home made quiches, also offer a variety of munch boards, including a mixed munch board that consists of hams/cheeses/olives/stuffed bell peppers/stuffed vine leaves and more. Don't forget to try the cakes, freshly made every day you'll be spoilt for choice.

The café is dog friendly and is also fully licensed so you can enjoy a nice glass of wine or a beer with your food and there's even outside pavement seating.

Approximate travel times from the Hovertravel terminal

50 MINS	13 MINS	22 MINS	9 MINS
-------------------	-------------------	-------------------	------------------

Seaview Deli

The Seaview Deli, nestled in the picturesque coastal village of Seaview on the Isle of Wight, is a haven for food lovers seeking culinary delights. This charming deli offers a unique and enticing experience that captivates both locals and visitors alike.

With seating available both inside and outside, you can choose to enjoy your selection right there or take it with you for a picnic on the nearby beach. The tranquil seaside location adds an extra touch of charm to your dining experience.

The Seaview Deli is not just a place to satisfy your taste buds; it's a destination that celebrates the art of food and the joy of discovering new flavours. So, whether you're a local resident or a visitor to the Isle of Wight, be sure to immerse yourself in the culinary delights that await at The Seaview Deli.





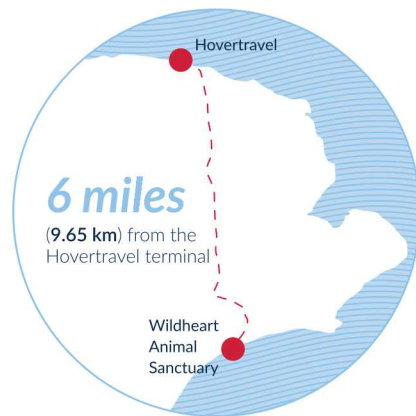
20% OFF ENTRY*

Wildheart Animal Sanctuary

Escape to a place where compassion and wonder unite – the Wildheart Animal Sanctuary Nestled along the sun-kissed shores of Sandown Bay, this haven offers the ultimate luxury for rehabilitated animals. From majestic lions and tigers to mischievous monkeys and fascinating spiders, the sanctuary boasts an enthralling array of wildlife. It's an adventure that appeals to the entire family, promising cherished memories and a renewed appreciation for our animal kingdom.

Visit: wildheartanimalsanctuary.org

*Receive **20% off** of your gate entry when you show your valid Hovertravel ticket. Scan the code to find out more.



Approximate travel times from the Hovertravel terminal

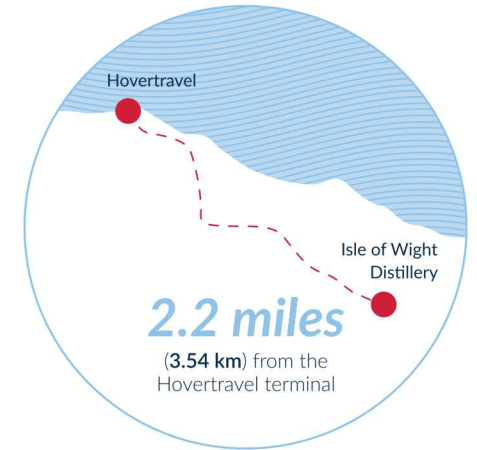


Isle of Wight Distillery

The home of Mermaid Gin

Experience the finest spirits and witness the captivating stills in action, all from the cosy confines of The Mermaid Bar. Nestled amidst picturesque countryside near Ryde, savour a refreshing Mermaid and Tonic on the terrace or unwind by the inviting log fire with hand crafted cocktails. With delectable cuisine and an exquisite cocktail menu, there's an enticing delight for every palate to relish.

Visit: isleofwightdistillery.com



Approximate travel times from the Hovertravel terminal

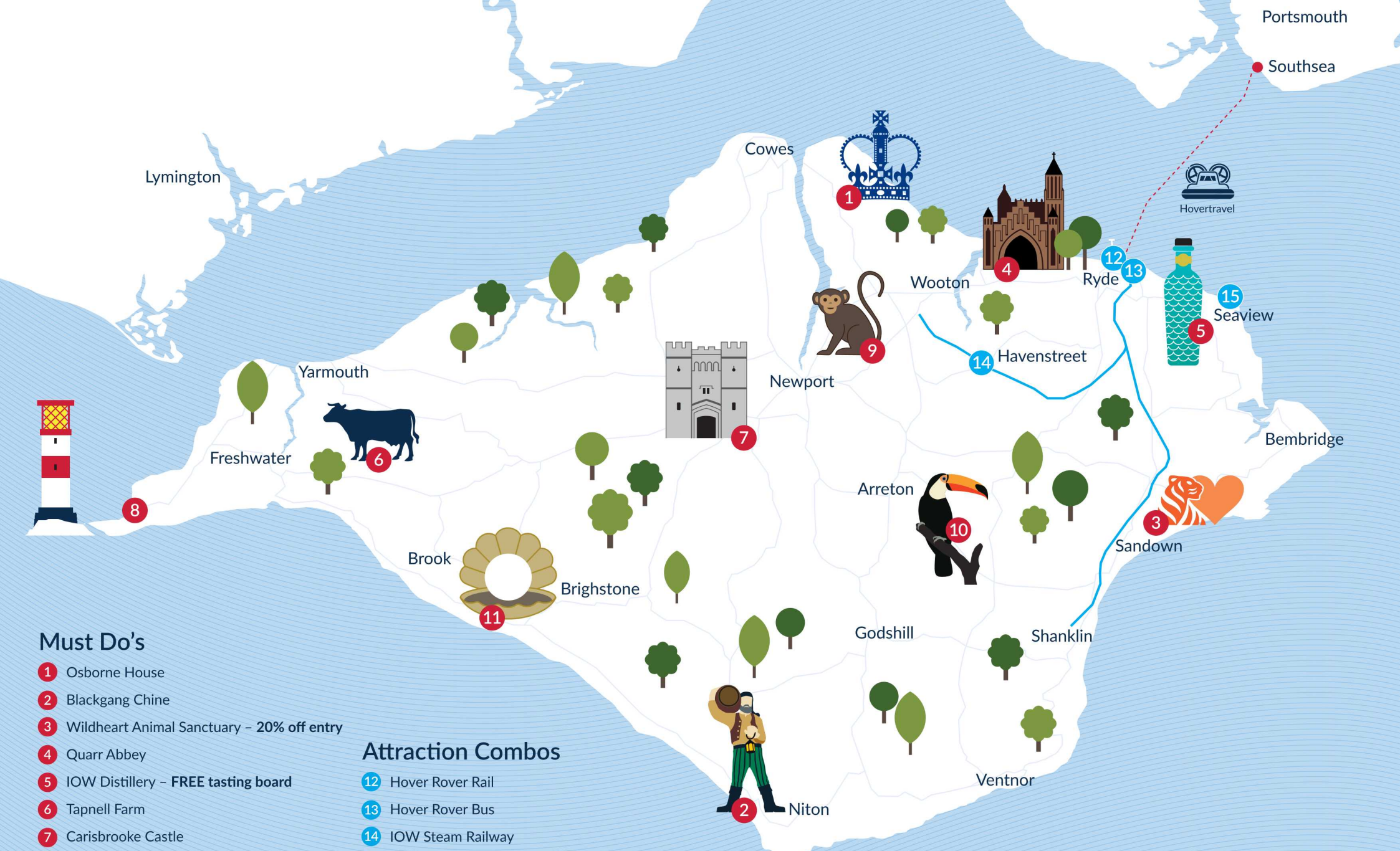


*Receive **FREE** Island Spirit Tasting Board worth £9 when you present your valid Hovertravel ticket. Scan the code to find out more.



FREE tasting board*

MERMAID
SMALL BATCH
GIN
ISLE OF WIGHT DISTILLERY



Must Do's

- 1 Osborne House
- 2 Blackgang Chine
- 3 Wildheart Animal Sanctuary – 20% off entry
- 4 Quarr Abbey
- 5 IOW Distillery – FREE tasting board
- 6 Tapnell Farm
- 7 Carisbrooke Castle
- 8 The Needles
- 9 Monkey Haven
- 10 Amazon World Zoo
- 11 Isle of Wight Pearl

Attraction Combos

- 12 Hover Rovers Rail
- 13 Hover Rovers Bus
- 14 IOW Steam Railway
- 15 Seaview Fly & Dine



Scan here to book your combination tickets



Dog friendly beaches

A beach adventure awaits your furry friend! Embrace sandy shores, playful waves, and rock pools. From vast sands to hidden coves, some beaches welcome dogs all year round such as West Ryde Beach, Seagrove Bay, The Duver and Bembridge Beach ensuring a tail-wagging experience even in the summer.

Ryde - Discover a dog-friendly haven in Ryde, where sandy strolls are a year-round joy to the left side of Ryde Pier. Cafes offer treats and water bowls for your furry companion. Note that some areas are off-limits to dogs from March to September.

Springvale - Dogs are welcome from 1st October through to 30th April.



Approx. travel times from the Hovertravel terminal

1. **West Ryde Beach** – 0.3 miles, 6 minute walk
2. **Ryde Beach** – 0.4 miles, 8 minute walk
3. **Puckpool Park** – 1.5 miles, 31 minute walk
4. **Seagrove Bay** – 3 miles, 28 minutes by Bus
4. **The Duver** – 4.5 miles, 23 minutes by Bus
6. **Bembridge Beach** – 6.1 miles, 26 minutes by Bus

Bus Routes

Exploring the Island is easy by bus

The number 8 route operated by Southern Vectis is a popular choice for tourists as it traverses several notable destinations on the Isle of Wight. Starting from Ryde bus station, conveniently located near the Hovertravel terminal, the number 8 bus takes you on a scenic journey along the eastern coastline towards the popular village of Bembridge. You'll pass the **Isle of Wight Distillery** home to the Mermaid Gin, where you can enjoy a Mermaid and Tonic on the terrace or relax in comfort by the log fire with a cocktail or two. Travel through quaint seaside towns such as Seaview, where you can take in stunning coastal views and relax on the beaches. The bus then takes you to Bembridge, a delightful village renowned for its beautiful harbour, sandy beaches, and inviting pubs and restaurants. Here, you can savour fresh seafood, take leisurely walks along the coast, or visit the Bembridge Lifeboat Station to learn about the island's maritime heritage. This route also passes by some fantastic Isle of Wight Attractions such as **Wildheart Animal Sanctuary, Dinosaur Isle** and **Amazon World**.



Isle of Wight Distillery, home of Mermaid Gin

The Downs Breezer route, another fantastic option for visitors to the Isle of Wight. The Downs Breezer showcases the island's natural beauty, taking you through the picturesque countryside and offering breathtaking views.

The **Downs Breezer** also allows you to explore the charming villages of Godshill and Shanklin. Godshill is famous for its quintessential thatched-roof cottages, an ancient church, and a variety of tearooms and gift shops. Shanklin, as mentioned earlier, features the enchanting Shanklin Chine, a gorge with waterfalls and lush vegetation, creating a magical atmosphere.



Amazon World, Arreton

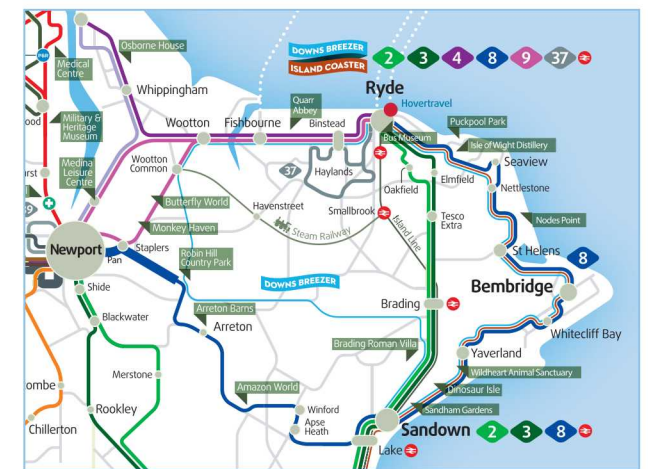
Visit: islandbuses.info



Wildheart Animal Sanctuary, Sandown



Dinosaur Isle, Sandown





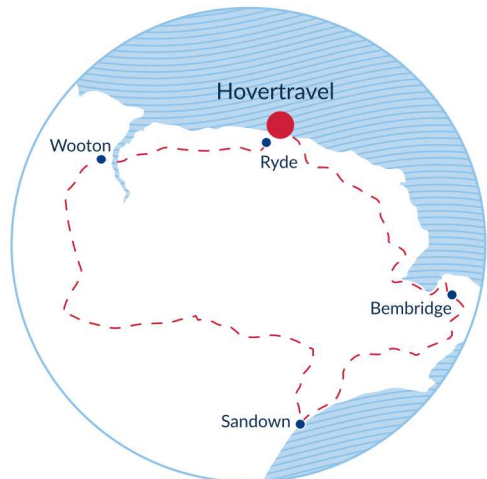
View over Bembridge Downs
by Isle of Wight UK

Downs Breezer

Open top bus route

Embark on a 10-minute flight with Hovertravel across the Solent, then start your journey aboard the Downs Breezer with Southern Vectis. This is a scenic circular route that meanders through picturesque countryside, traversing the elevated crests of the Downs. Along the way, you'll be treated to breathtaking vistas of the English Channel and the sprawling expanse of the Island.

This bus service is available to you just a stones throw away from our Ryde Terminal. The route will take you to various notable destinations, including Ryde town, Wootton Station, Robin Hill Adventure Park, Sandown Seafront, Wildheart Animal Sanctuary, Dinosaur Isle, and Bembridge.



Operating on an hourly basis from Ryde, the open-top double deck buses are operated by friendly local drivers. You have the freedom to embark or disembark at any point along the route, facilitated by your Hover Rover Ticket. Moreover, this ticket grants you unlimited travel across the Island on all Southern Vectis buses.

Visit: islandbuses.info/days-out-bus